



Class 3 Conduits and Accessories

Cable Containment System

Wanco Electric is the market leading Singapore manufacturer and supplier for high quality steel rigid conduits, fittings and accessories.

Wanco Class 3 rigid steel conduits and accessories meet the latest respective standards and have been one of the top approved brands that supply to major government infrastructures and many private projects locally in Singapore and around the world.

We have adopted very stringent quality control procedures throughout the manufacturing process right from the raw materials to the finished product. With this in mind, we pride ourselves to be a supplier that delivers high quality products with competitive pricing and excellent service.



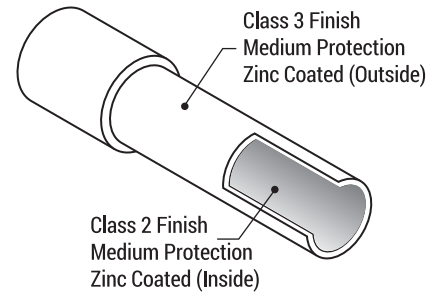
Introduction	3
Technical Data	4
Boxes	5
Fittings	6 - 7
Back Boxes	8
Flexible Conduits	9
Conduit Fittings	10
Equipment & Rods	10

INTRODUCTION

WANCO is a leading brand for cable containment and management systems. WANCO Electric is based in Singapore since 2008 and we are an ISO 9001:2000 certified company. WANCO rigid conduits have been the specification of choice among M&E and MEP consultants in Singapore, South East Asia, Middle East regions and other parts of the world.

WANCO steel conduits are manufactured in accordance to respective standards such as BS31:1940 (Class 3), BS 4568 Part 1:1940, BS EN 50086-2-1: 1994, BS EN 61386-21 : 2004 and the latest BS EN IEC 61386-21:2021 + A11:2021

For colour identification of services, there are options for Class 3 conduits to be finished with Epoxy Coating. Refer to below table.



(CLASS 3) BS 31

Finishes	Item Code	Size	Outer Diameter		Nominal Thickness	Std Length w/o Coupler	No. of Lengths Per Bundle	No. of Bundle Per Lift	Total Lengths Per Lift
			Min	Max					
Galvanised	SCPC3034	3/4"	18.8	19.1	1.6 ± 0.15mm	3.75 Metres	10	20	200
Galvanised	SCPC3100	1"	25.1	25.4	1.6 ± 0.15mm		10	20	200
Galvanised	SCPC3114	1-1/4"	31.5	31.8	1.6 ± 0.15mm		5	20	100
Galvanised	SCPC3200	2"	50.5	50.8	2.0 ± 0.15mm		5	10	50
Epoxy White	SCPC3034WH	3/4"	18.8	19.1	1.6 ± 0.15mm		10	20	200
Epoxy White	SCPC3100WH	1"	25.1	25.4	1.6 ± 0.15mm		10	20	200
Epoxy White	SCPC3114WH	1-1/4"	31.5	31.8	1.6 ± 0.15mm		5	20	100
Epoxy White	SCPC3200WH	2"	50.5	50.8	2.0 ± 0.15mm		5	10	50
Epoxy Red	SCPC3034RD	3/4"	18.8	19.1	1.6 ± 0.15mm		10	20	200
Epoxy Red	SCPC3100RD	1"	25.1	25.4	1.6 ± 0.15mm		10	20	200
Epoxy Red	SCPC3114RD	1-1/4"	31.5	31.8	1.6 ± 0.15mm		5	20	100
Epoxy Red	SCPC3200RD	2"	50.5	50.8	2.0 ± 0.15mm		5	10	50
Epoxy Orange	SCPC3034OR	3/4"	18.8	19.1	1.6 ± 0.15mm		10	20	200
Epoxy Orange	SCPC3100OR	1"	25.1	25.4	1.6 ± 0.15mm		10	20	200
Epoxy Orange	SCPC3114OR	1-1/4"	31.5	31.8	1.6 ± 0.15mm		5	20	100
Epoxy Orange	SCPC3200OR	2"	50.5	50.8	2.0 ± 0.15mm		5	10	50

(CLASS 3) BS 4568 Part 1:1940, BS EN 50086-2-1: 1994, BS EN 61386-21 : 2004 & BS EN IEC 61386-21:2021 + A11:2021

Finishes	Item Code	Size	Outer Diameter		Nominal Thickness	Std Length w/o Coupler	No. of Lengths Per Bundle	No. of Bundle Per Lift	Total Lengths Per Lift
			Min	Max					
Galvanised	SCPC320	20	19.7	20.0	1.6 ± 0.15mm	3.75 Metres	10	20	200
Galvanised	SCPC325	25	24.6	25.0	1.6 ± 0.15mm		10	20	200
Galvanised	SCPC332	32	31.6	32.0	1.6 ± 0.15mm		5	20	100
Galvanised	SCPC350	50	50.0	50.0	1.8 ± 0.15mm		5	10	50
Epoxy White	SCPC320WH	20	19.7	20.0	1.6 ± 0.15mm		10	20	200
Epoxy White	SCPC325WH	25	24.6	25.0	1.6 ± 0.15mm		10	20	200
Epoxy White	SCPC332WH	32	31.6	32.0	1.6 ± 0.15mm		5	20	100
Epoxy White	SCPC350WH	50	50.0	50.0	1.8 ± 0.15mm		5	10	50
Epoxy Orange	SCPC320OR	20	19.7	20.0	1.6 ± 0.15mm		10	20	200
Epoxy Orange	SCPC325OR	25	24.6	25.0	1.6 ± 0.15mm		10	20	200
Epoxy Orange	SCPC332OR	32	31.6	32.0	1.6 ± 0.15mm		5	20	100
Epoxy Orange	SCPC350OR	50	50.0	50.0	1.8 ± 0.15mm		5	10	50
Epoxy Red	SCPC320RD	20	19.7	20.0	1.6 ± 0.15mm		10	20	200
Epoxy Red	SCPC325RD	25	24.6	25.0	1.6 ± 0.15mm		10	20	200
Epoxy Red	SCPC332RD	32	31.6	32.0	1.6 ± 0.15mm		5	20	100
Epoxy Red	SCPC350RD	50	50.0	50.0	1.8 ± 0.15mm		5	10	50

EPOXY POWDER COATED CONDUITS

- Option for Epoxy coating is available that not only provide identification and aesthetic purposes, it also gives excellent protection and scratch resistance.
- Factory epoxy conduits gives high productivity compared to on-site painting.
- Standard colours can be used to identify and differentiate various Mechanical, Electrical & Connectivity services.

INDUSTRY COLOUR - Code Application

GALVANIZED : General Wiring
RED : Fire alarm system
ORANGE : Electrical wiring
WHITE : Telecommunication

The above are our standard colours.
 Other colours are also available upon request and similarly subject to minimum order quantity (MOQ) of 200 lengths

CABLE CAPACITIES OF CONDUIT

The following tables give guidance of the calculation of the number of single-core p.v.c. insulated cables which can be located in various sizes of conduit.

The tables deal with two particular cases:

- (i) Single-core p.v.c. insulated cables in straight runs not exceeding 3 metres in length
- (ii) Single-core p.v.c. insulated cables in straight runs exceeding 3 metres in length or in runs of any length with bends or sets

Straight runs not exceeding 3 metres in length

For each type of cable being used obtain the cable factor from Table 1, Sum all the the cable factors and compare with the conduit factors given in Table 2.
The conduit sizes which will accommodate the cables are those with a conduit factor equal to or greater than the sum of the cable factors.

Type of Conductor	Conductor Cross-Sectional Area mm ²	Factor
Solid	1	22
	1.5	27
	2.5	39
Standard	1.5	31
	2.5	43
	4	58
	6	88
	10	146

Table 1

Conduit dia mm	Factor
16	290
20	460
25	800
32	1400

Table 2

Table 1
Cable factors for short straight run

Table 2
Cable factors for short straight run

These tables are based on the 16th edition of the I.E.E. Wiring Regulations Appendix 12

Table 3
Cable factors for straight runs or runs incorporating bends

Table 4
This table is based on the 16th edition of I.E.E. Wiring Regulations Appendix 11

These tables are for guidance only and future wiring requirements needs to be taken into account

Straight runs not exceeding 3 metres in length or runs of any length incorporating bends or sets

For each type of cable being used, obtain the cable factor from Table 3. Sum all the cable factors and compare with the conduit factor given in Table 4 for the relevant length of run and the number of bends and sets in that run.

The conduit sizes which will accommodate the cables are those with a conduit factor equal or greater than the sum of the cable factors.

Type of Conductor	Conductor Cross-Sectional Area mm ²	Factor
Solid or Standard	1	16
	1.5	22
	2.5	30
	4	43
	6	58
	10	105

Table 3

Spacing of Support for Conduits

The following tables gives guidance on the spacing of supports for conduit.

Normal size of Conduit mm	Max Distance between Support	
	Horizontal Runs m	Vertical Runs m
16mm	0.75	1.0
17mm - 25mm	1.75	2.0
26mm - 40mm	2.0	2.25
Over 40mm	2.25	2.5

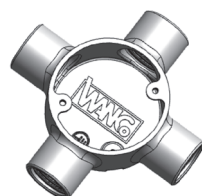
Table 4

**TERMINAL BOX - 1 WAY SMALL**

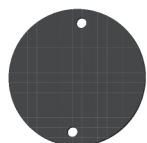
ITEM CODE	SIZE	BOX/CTN QTY
SCB1WC3034	3/4"	10/100
SCB1WC3100	1"	10/100
SCB1WC3114	1 1/4"	10/100
SCB1WC3020	20mm	10/100
SCB1WC3025	25mm	10/100
SCB1WC3032	32mm	10/100

**ANGLE BOX - 2 WAYS SMALL**

ITEM CODE	SIZE	BOX/CTN QTY
SCB2AC3034	3/4"	10/100
SCB2AC3100	1"	10/100
SCB2AC3114	1 1/4"	10/100
SCB2AC3020	20mm	10/100
SCB2AC3025	25mm	10/100
SCB2AC3032	32mm	10/100

**CROSS BOX - 4 WAYS SMALL**

ITEM CODE	SIZE	BOX/CTN QTY
SCB4WC3W034	3/4"	10/100
SCB4WC3W100	1"	10/100
SCB4WC3W114	1 1/4"	10/100
SCB4WC3W020	20mm	10/100
SCB4WC3W025	25mm	10/100
SCB4WC3W032	32mm	10/100

**CIRCULAR BOX RUBBER GASKET**

ITEM CODE	SIZE	BOX/CTN QTY
SCABCRGS	20 & 25mm	10/1000
SCABCRGL	32mm	5/500

**CIRCULAR BOX COVER - 65mm & 86mm**

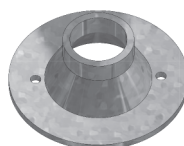
ITEM CODE	SIZE	BOX/CTN QTY
SCABCC3S	65mm	5/100
SCABCC3L	86mm	4/50

**THROUGH BOX - 2 WAYS SMALL**

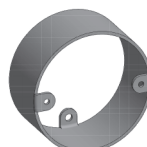
ITEM CODE	SIZE	BOX/CTN QTY
SCB2WC3W034	3/4"	10/100
SCB2WC3W100	25mm	10/100
SCB2WC3W114	1 1/4"	10/100
SCB2WC3W020	20mm	10/100
SCB2WC3W025	25mm	10/100
SCB2WC3W032	32mm	10/100

**TEE BOX - 3 WAYS SMALL**

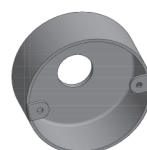
ITEM CODE	SIZE	BOX/CTN QTY
SCB3WC3034	3/4"	10/100
SCB3WC3100	1"	10/100
SCB3WC3114	1 1/4"	10/100
SCB3WC3020	20mm	10/100
SCB3WC3025	25mm	10/100
SCB3WC3032	32mm	10/100

**DOME COVER**

ITEM CODE	SIZE	BOX/CTN QTY
SCADCC3034	3/4"	10/200
SCADCC3001	1"	10/200
SCADCC3020	20mm	10/200
SCADCC3025	25mm	10/200

**EXTENSION RING**

ITEM CODE	SIZE	BOX/CTN QTY
SCAERC320	20mm	10/100
SCAERC325	25mm	10/100

**LOOP IN BOX**

ITEM CODE	SIZE	BOX/CTN QTY
SCALBC320	20mm	10/100
SCALBC325	25mm	10/100

Material & Finishing:

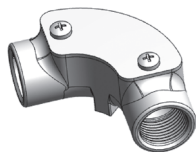
- IEC 61386-1 / BS4568 Class 3 boxes in Cast Iron & Galvanized Finish or Alloy type

Depth of boxes:

- 20mm at min 25mm, tapped with M4 hole at 50.8mm centres
- 25mm at min 28mm, tapped with M4 hole at 50.8mm centres

Note :

- Boxes come with tapped hole at base for earthing screw
- Covers and M4 fixing screws are supplied separately



INSPECTION ELBOW

ITEM CODE	SIZE	BOX/CTN QTY
SCAIEC3034	3/4"	10/200
SCAIEC3100	1"	10/200
SCAIEC3114	1 1/4"	10/200
SCAIEC3020	20mm	10/200
SCAIEC3025	25mm	10/200
SCAIEC3032	32mm	10/200

Material: Malleable Iron



COUPLER / SOCKET

ITEM CODE	SIZE	BOX/CTN QTY
SCACSC3034	3/4"	10/1000
SCACSC3100	1"	10/500
SCACSC3114	1 1/4"	10/400
SCACSC3020	20mm	10/1000
SCACSC3025	25mm	10/500
SCACSC3032	32mm	10/400

Material: Steel



SHORT NIPPLE

ITEM CODE	SIZE	BOX/CTN QTY
SCASNC3020	20mm	10/1000
SCASNC3025	25mm	10/1000

Material: Steel



SPACE BAR SADDLE

ITEM CODE	SIZE	BOX/CTN QTY
SCASBSC320	3/4" / 20mm	10/1000
SCASBSC325	1" / 25mm	10/1000
SCASBSC332	1 1/4" / 32mm	10/500

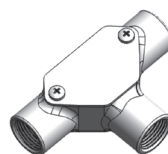
Material: Steel



HALF SADDLE

ITEM CODE	SIZE	BOX/CTN QTY
SCAHSC320	3/4" / 20mm	5/2000
SCAHSC325	1" / 25mm	5/2000
SCAHSC332	1 1/4" / 32mm	10/1000

Material: Steel



INSPECTION TEE

ITEM CODE	SIZE	BOX/CTN QTY
SCAITC3034	3/4"	10/200
SCAITC3100	1"	10/200
SCAITC3114	1 1/4"	5/100
SCAITC3020	20mm	10/200
SCAITC3025	25mm	10/200
SCAITC3032	32mm	5/100

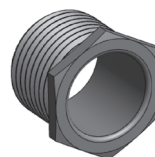
Material: Malleable Iron



INSPECTION BEND

ITEM CODE	SIZE	BOX/CTN QTY
SCAIBC3034	3/4"	10/200
SCAIBC3100	1"	10/200
SCAIBC3114	1 1/4"	10/100
SCAIBC3020	20mm	10/200
SCAIBC3025	25mm	10/200
SCAIBC3032	32mm	10/100

Material: Malleable Iron



CONDUIT REDUCER

ITEM CODE	SIZE	BOX/CTN QTY
SCARC3114100	1 1/4" - 1"	20/500
SCARC3100034	1" - 3/4"	20/1000
SCARC3032025	32mm - 25mm	20/500
SCARC3025020	25mm - 20mm	20/1000

Material: Alloy/Brass



QUICK CONNECTOR / COUPLING

ITEM CODE	SIZE	BOX/CTN QTY
SCAQCC3020	20mm	10/1000
SCAQCC3025	25mm	10/1000

Material: Steel



NYLON NAIL PLUG

ITEM CODE	SIZE	BOX/CTN QTY
FNP533NY	Nylon Nail Plug 5/33	100pcs/pkt
FNP637NY	Nylon Nail Plug 6/37	100pcs/pkt

Material: Nylon



CONDUIT PIPE CLAMP

ITEM CODE	SIZE	BOX/CTN QTY
WSTPCG03420	3/4" / 20mm	20/500
WSTPCG10025	1" / 25mm	20/500
WSTPCG13432	1-1/4" / 32mm	20/500

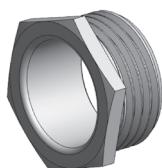
Material : Steel



KON CLIP

ITEM CODE	SIZE	BOX/CTN QTY
SCAAKCA0020	20mm	20/800
SCAAKCA0025	25mm	25/800

Material : Steel



SHORT MALE BUSH

ITEM CODE	SIZE	BOX/CTN QTY
SCAMBS034	3/4"	20/2000
SCAMBS100	1"	20/2000
SCAMBS114	1 1/4"	20/1000
SCAMBS134	1 3/4"	20/1000
SCAMBS200	2"	10/500
SCAMBS020	20mm	20/2000
SCAMBS025	25mm	20/2000
SCAMBS032	32mm	20/1000
SCAMBS038	38mm	20/1000
SCAMBS050	50mm	10/500

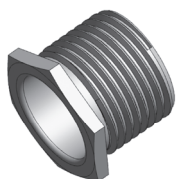
Material : Alloy / Brass



SHORT FEMALE BUSH

ITEM CODE	SIZE	BOX/CTN QTY
SCABFBS020	3/4" / 20mm	20/500
SCABFBS025	1" / 25mm	20/500
SCABFBS032	1 1/4" / 32mm	20/500
SCABFBS038	1 1/2" / 38mm	20/300
SCABFBS050	2" / 50mm	10/100

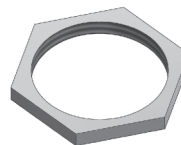
Material : Alloy / Brass



LONG MALE BUSH

ITEM CODE	SIZE	BOX/CTN QTY
SCAMBL034	3/4"	20/2000
SCAMBL100	1"	20/2000
SCAMBL114	1 1/4"	20/1000
SCAMBL134	1 3/4"	20/1000
SCAMBL200	2"	10/500
SCAMBL020	20mm	20/2000
SCAMBL025	25mm	20/2000
SCAMBL032	32mm	20/1000

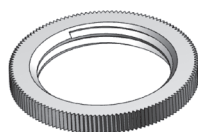
Material : Alloy / Brass



LOCKNUT

ITEM CODE	SIZE	BOX/CTN QTY
SCALN**034	3/4"	20/500
SCALN**100	1"	20/500
SCALN**114	1 1/4"	20/500
SCALN**020	20mm	20/300
SCALN**025	25mm	10/100

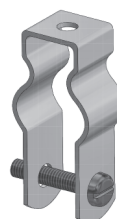
Material : ** BR = Brass, PG = Pre-Galvanised



LOCK RING

ITEM CODE	SIZE	BOX/CTN QTY
SCAL020	20mm	20/5000
SCAL025	25mm	20/3000
SCAL032	32mm	20/2000

Material : Galvanised / Alloy



PIPE HANGER

ITEM CODE	SIZE	BOX/CTN QTY
SCAPH020	20mm	400
SCAPH025	25mm	350

Material : Steel

KNOCK-OUT BOXES 1 GANG

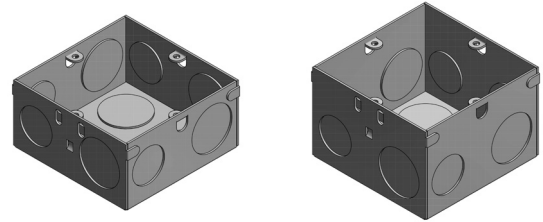
ITEM CODE	TYPE	SIZE (mm)	THICKNESS (mm)
SCAKOB1GS12	NORMAL	75(W) x 75(L) x 35(D)	1.1 ~ 1.2
SCAKOB1GD12	HIGH DEPTH	75(W) x 75(L) x 47(D)	1.1 ~ 1.2
SCAKOB1GS08	NORMAL	75(W) x 75(L) x 35(D)	0.8 ~ 0.9
SCAKOB1GD08	HIGH DEPTH	75(W) x 75(L) x 47(D)	0.8 ~ 0.9

Material : Galvanised Steel

Standard : BS4662 : 1970 for 1.2mmT

Finishing : Galvanised / Hot Dipped Galvanised

Features : 1 x adjustable lug, 1 x earth terminal, mixture of 20 & 25mm KO round holes



KNOCK-OUT BOXES 2 GANG

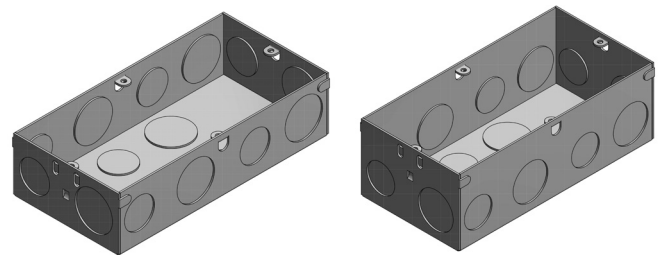
ITEM CODE	TYPE	SIZE (mm)	THICKNESS (mm)
SCAKOB2GS12	NORMAL	135(W) x 75(L) x 35(D)	1.1 ~ 1.2
SCAKOB2GD12	HIGH DEPTH	135(W) x 75(L) x 47(D)	1.1 ~ 1.2
SCAKOB2GS08	NORMAL	135(W) x 75(L) x 35(D)	0.8 ~ 0.9
SCAKOB2GD08	HIGH DEPTH	135(W) x 75(L) x 47(D)	0.8 ~ 0.9

Material : Galvanised Steel

Standard : BS4662 : 1970 for 1.2mmT

Finishing : Galvanised / Hot Dipped Galvanised

Features : 1 x adjustable lug, 1 x earth terminal, mixture of 20 & 25mm KO round holes



KNOCK-OUT BOXES FISH TAIL TYPE

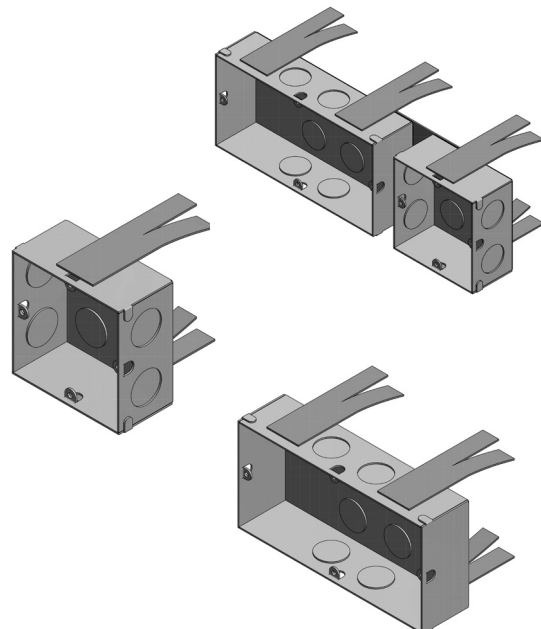
ITEM CODE	TYPE	SIZE (mm)	THICKNESS (mm)
SCAKOBFT1G	1-GANG	75(W) x 75(L) x 35(D)	≥ 1.1
SCAKOBFT2G	2-GANG	135(W) x 75(L) x 35(D)	≥ 1.1
SCAKOBFT21G	2+1 GANG	225(W) x 75(L) x 35(D)	≥ 1.1

Material : Steel

Standard : BS4662 : 1970

Finishing : Hot-Dipped Galvanized

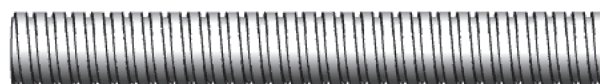
Features : 1 x earth terminal, mixture of 20 & 25mm KO round holes & welded fish tails



STEEL FLEXIBLE CONDUIT

ITEM CODE	SIZE	PACKING PER COIL (Mtr)
SCF012	1/2"	15
SCF034	3/4"	15
SCF058	5/8"	15
SCF100	1"	15
SCF114	1 1/4"	15
SCF112	1 1/2"	15
SCF200	2"	15

Material : Electro-Galvanized Steel
Construction : Highly flexible and economical while giving good mechanical protection.
Temp range : -50 degC to +350 degC
IP Rating : IP40
Standard : BS 731-1 / BS EN 50086-1 / BS EN 61386-1



PVC COATED G.I. FLEXIBLE CONDUIT

ITEM CODE	SIZE	PACKING PER COIL (Mtr)
SCFPVC012	12mm	30
SCFPVC016	16mm	30
SCFPVC020	20mm	30
SCFPVC025	25mm	30
SCFPVC032	32mm	15
SCFPVC038	38mm	15
SCFPVC050	50mm	15
SCFPVC075	75mm	10

Material : Electro-Galvanized Steel
Jacket : Heat retardant self extinguishing P.V.C Sheath
Construction : Highly Flexible, providing excellent protection against water and particles. Able to withstand vibrations which is suitable for use on equipments and installations
Colour : Standard Black (Other colours are available upon request subject to MOQ)
Temperature : -25 degC to +120 degC
IP Rating : IP67 (if installed with liquid tight accessories)
Standard : BS 731-1 / BS EN 50086-1 / IEC 61386-23 : 2002 & IEC 61386-1 : 2008-02



LOW SMOKE ZERO HALOGEN COATED FLEXIBLE CONDUIT

ITEM CODE	SIZE	PACKING PER COIL (Mtr)
SCFPVCLSZH012	12mm	30
SCFPVCLSZH016	16mm	30
SCFPVCLSZH020	20mm	30
SCFPVCLSZH025	25mm	30
SCFPVCLSZH032	32mm	15
SCFPVCLSZH038	38mm	15
SCFPVCLSZH050	50mm	15
SCFPVCLSZH075	75mm	10

Material : Electro-Galvanized Steel
Jacket : Heat resistant, low smoke halogen free sheath
Construction : Flexible and providing protection without emitting hazardous gases when heated or in flames. Suitable for installations in fire-hazard areas.
Colour : Black
Temperature : -20 deg C to +120 deg C
IP Rating : IP67 (when installed with water / liquid tight accessories)
Standard : IEC 61386 & IEC 60754-1

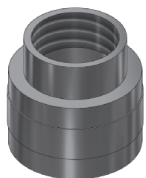


LIQUID TIGHT FLEXIBLE CONDUIT

ITEM CODE	SIZE	PACKING PER COIL (Mtr)
SCFPVCLT012	12mm	30
SCFPVCLT016	16mm	30
SCFPVCLT020	20mm	30
SCFPVCLT025	25mm	30
SCFPVCLT032	32mm	15
SCFPVCLT038	38mm	15
SCFPVCLT050	50mm	15
SCFPVCLT075	75mm	10

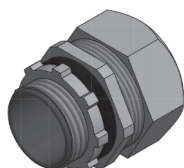
Material : Electro-Galvanized Steel
Jacket : Thick PVC sheath that is resistant to sunlight, oil, acid & seawater
Construction : Highly flexible and good insulation, ideal for engineering installations such as transportation, transmission and equipment distribution system
Colour : Black
Temperature : -10 deg C to +120 deg C
IP Rating : IP67 (when installed with water / liquid tight accessories)
Standard : IEC 61386 & IEC 60754-1





FEMALE ADAPTOR

ITEM CODE	SIZE	CTN QTY
SCAFAB020	20mm X 20mm	500
SCAFAB025	25mm X 25mm	500
Material	: Brass	
Finishing	: Brass	
IP Rating	: IP40	



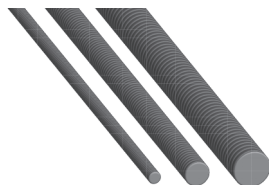
LIQUID / WATER TIGHT ADAPTOR

ITEM CODE	SIZE	CTN QTY
SCALTA02016	20mm X 16mm	500
SCALTA02020	20mm X 20mm	500
SCALTA02520	25mm X 20mm	500
SCALTA02525	25mm X 25mm	300
SCALTA03232	32mm X 32mm	200
SCALTA03838	38mm X 38mm	100
SCALTA05050	50mm X 50mm	50
Material	: Steel / Alloy / Die Cast	
Finishing	: Galvanized	
IP Rating	: IP65	



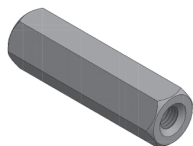
STOPPING PLUG

ITEM CODE	SIZE	CTN QTY
SCAB20	20mm	10/1000
SCAB25	25mm	10/1000
SCAB32	32mm	5/250
Material	: Alloy / Brass	
Finishing	: Galvanized / Brass	
IP Rating	: IP65	



GALVANIZED FULL THREADED ROD

ITEM CODE	SIZE
FTR386FGI	3/8" X 6FT
FTR383MGI	3/8" X 3M
FTR082MGI	M8 X 2M
FTR102MGI	M10 X 2M
FTR103MGI	M10 X 3M
FTR122MGI	M12 X 2M
FTR123MGI	M12 X 3M



EXTENSION LONG NUT

ITEM CODE	SIZE
FLN038GI	3/8"
FLNM08GI	M8
FLNM10GI	3/8"
FLNM12GI	3/8"
Material	: Alloy / Brass
Finishing	: Galvanized / Brass
IP Rating	: IP65



BRASS ADAPTOR C/W LOCK NUT AND RETAINING SCREW

ITEM CODE	SIZE	CTN QTY
SCA*ALN034016	3/4" x 16mm	1000
SCA*ALN034020	3/4" x 20mm	1000
SCA*ALN100020	1" x 20mm	500
SCA*ALN100025	1" x 25mm	500
SCA*ALN112112	1 1/2" x 1 1/2"	400
SCA*ALN114114	1 1/4" x 1 1/4"	400
SCA*ALN200200	2" x 2"	80
SCA*ALN020016	20 x 16mm	1000
SCA*ALN020020	20 x 20mm	1000
SCA*ALN025020	25 x 20mm	500
SCA*ALN025025	25 x 25mm	500
SCA*ALN032032	32 x 32mm	400
SCA*ALN050050	50 x 50mm	80

* Brass (B) Nickel plated (N)

Material	: Brass
Finishing	: (B) Brass / (N) Nickel Plated
IP Rating	: IP40



STEEL C-BRACKET

ITEM CODE	SIZE
SCACBC4300500400	3 3/4" X 5" X 4 3/4" X 4T" HDG
SCACBC4400600600	4 1/2" X 6 1/2" X 6 1/2" X 4T" HDG
SCACBG1200300300	2" X 3" X 3" X 4T" PRE-G
SCACBG1300400300	3" X 4" X 3 3/4" X 4T" PRE-G
SCACBG1300500400	3 3/4" X 5" X 4 3/4" X 4T" PRE-G
SCACBG1400600600	4 1/2" X 6 1/2" X 6 1/2" X 4T" PRE-G
SCACBG1600800800	6" X 8" X 8" X 4T" PRE-G

Equipment



CONDUIT BENDER

ITEM CODE	BOX/CTN QTY
SCBVC202532	1 SET PER BOX

Capacity: 16, 20, 25 & 32mm steel conduit to BS4568 & IEC 61386

A sturdy conduit bender equipment that comes with a dual-size forming device. Bends of 90 degs are easily achieved. Vice clamp for conduit diameter sizes of 20, 25 and 32mm are included.

**Disclaimer Notice**

WANCO products shall be installed and used as indicated in WANCO's product literature and instruction details. Improper installation, misuse, misapplication or other failure to comply/follow WANCO's recommended installation and accessories may cause malfunction, damage or warranty void/invalid.

Warranty

WANCO products are warranted to be free from defects and workmanship and in accordance with the specifications provided at the time of shipment/delivery or receipt by the Buyer or representatives of the Buyers.

The warranties do not cover wear and tear and shall not apply to Goods which have been subjected to mishandling, misuse or abuse, neglect, accident, damage, improper storage, improper installation or maintenance. Claims for any visible defects or non-conformities and/or for any shortage in the quantity delivered must be received within 7 days of delivery of the Goods.

Limitation of Liability

WANCO excludes all liability except such liability is directly attributable to the wilful or gross negligence of our employees. Liability claim in no event shall exceed the 10% of the total purchase price under the PO or contract. WANCO shall in no event be responsible for any loss of business profits, downtime or delay, labour, repair or material cost or similar consequential loss of damage incurred by the buyer.

All information contained in this entire literature/brochure may contain technical inaccuracies or typographical errors and may be changed, updated or deleted without prior notice.

As we are committed to continuous improvements, the design and specifications of the products are subject to change without prior notice.

©Copyright 2022 WANCO ELECTRIC PTE LTD, All rights reserved



Distributor



WANCO ELECTRIC PTE LTD

3 KIAN TECK ROAD SINGAPORE 628764
TEL: +65 6265 8176 FAX: +65 6265 5109
EMAIL: SALES@WANCOELECTRIC.COM.SG
WWW.WANCOELECTRIC.COM.SG